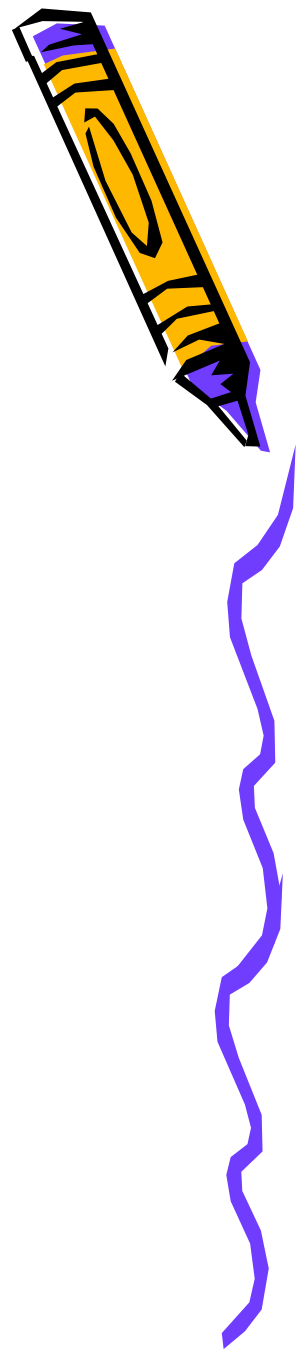


***WELCOME  
TO  
MOUNT RIVERVIEW  
PUBLIC SCHOOL***

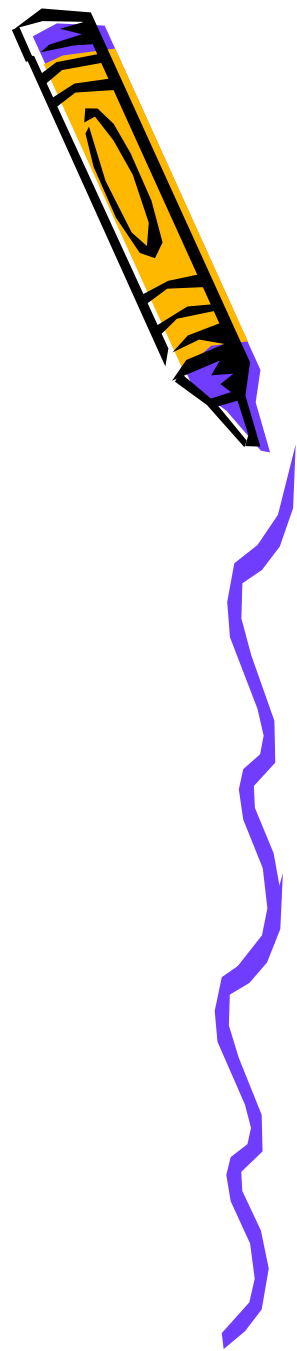


# ***Acknowledgement of Country***

**I would like to show my respect and  
acknowledge the Traditional  
Custodians of the Land, of Elders  
past and present, on which this  
meeting takes place.**



# ***TRANSITION for KINDERGARTEN 2021***



# A Smooth Start



- Developing a positive relationship with you to support your child's learning is vital to us.
- Our team of highly qualified teachers and support staff will give your child the best possible start.



# Life at School

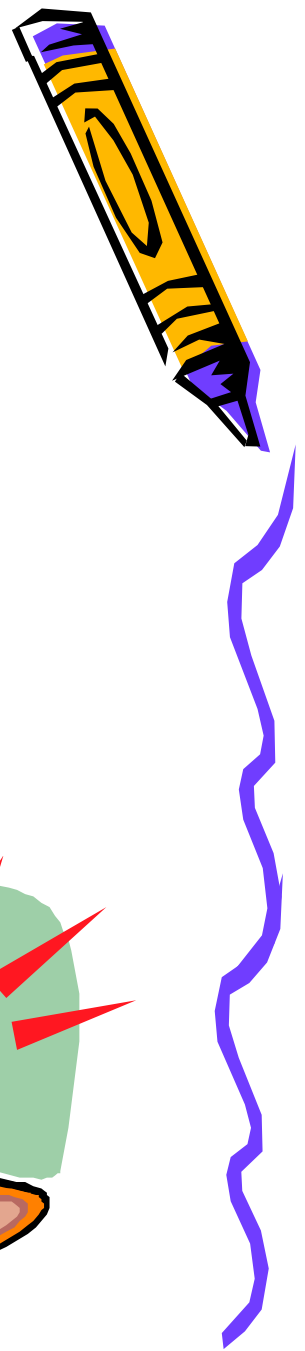
School hours-

*School starts- 9.00 a.m.*

*Recess-10.45-11.10 a.m.*

*Lunch -12.40-1.30 p.m.*

*Finish time- 3.00 p.m.*



# Life at School

## **Mt Riverview PS is a PBL school**

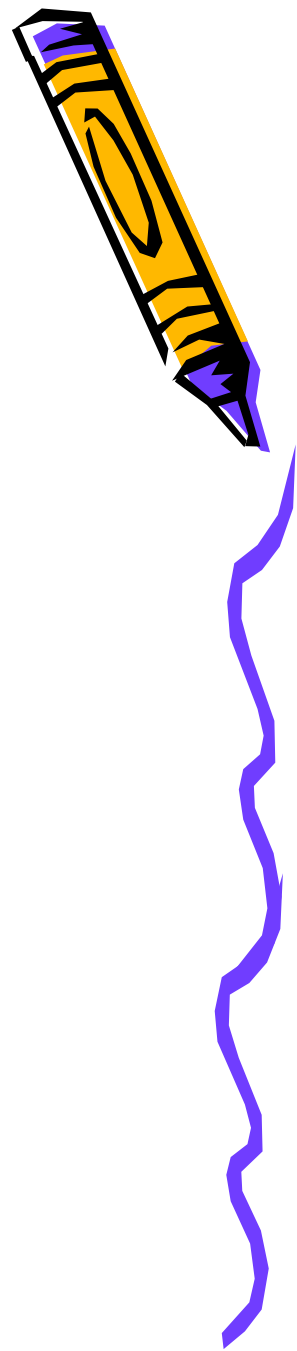
PBL is a proactive whole school approach for creating a positive, safe and supportive school climate in which students can learn and develop.

PBL encompasses our existing core values of:

**Be Safe**

**Be Respectful**

**Be a Learner**



# Life at School

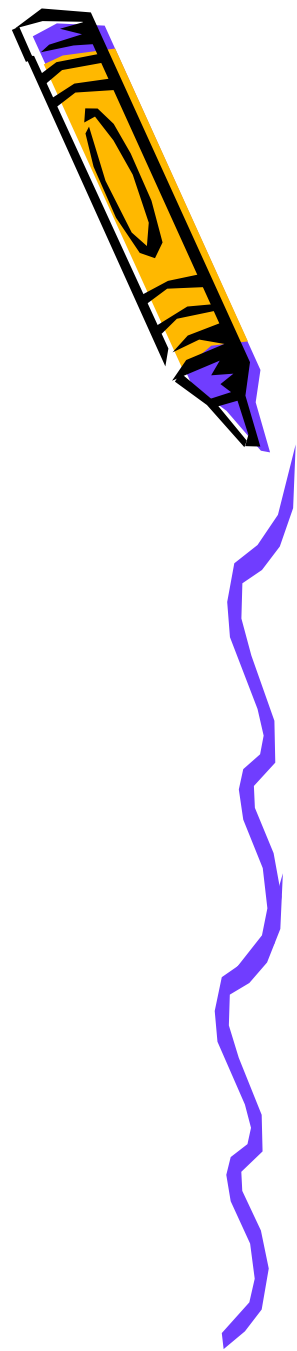
- Class organisation
- Absences
- Late to school/ Early leavers
- Picking children up at the end of the day





# Life at School

- Money
- Medication
- School newsletter – Educom
- Communication- Skoolbag App
- Photos- School Facebook





# Life at School



- School information night
- Assemblies
- Homework
- Buddies
- Scripture/Ethics
- Canteen



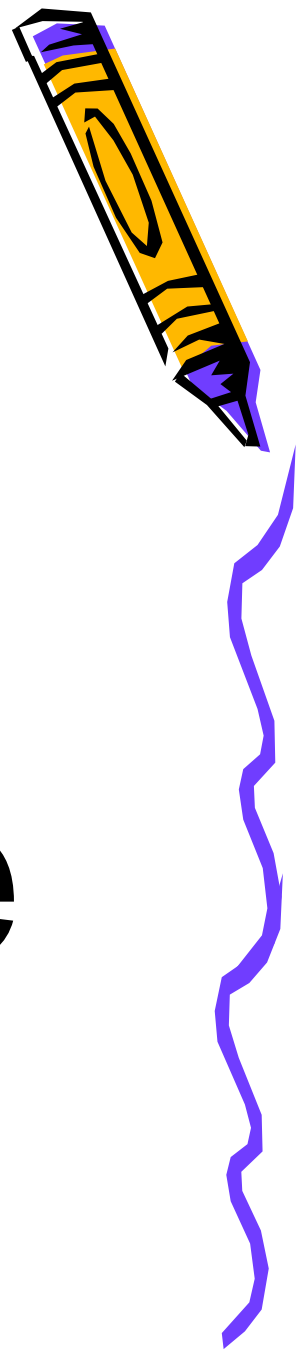
# Budgeting



- Uniforms
- Excursions
- In school performances
- Gymnastics program
- Financial assistance
- Travel to & from school
- Voluntary Contributions



Before and  
After  
School Care  
FUN KIDS



# Transition Program

- This year we are only able to run one x 1 hour session with the children which we will hold on **Thursday 3<sup>rd</sup> December**
- To do this we will divide our group of children into 2 groups. We will have one group come from 9.30-10.30 and the second group from 11.30-12.30.
- On our Skoolbag app, please fill in the e-form to show the time that best suits you
- Please bring the children to the hall to sign in.



# Life at School

- School commencement-

*Wednesday 27<sup>th</sup> January 2021 - Teachers resume duty*

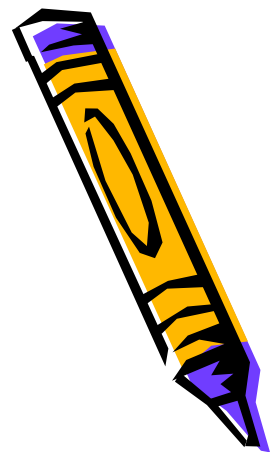
*Thursday 28<sup>th</sup> January 2021 – School Development Day*

*Friday 29<sup>th</sup> January 2021- Grades 1-6 start school*

*Friday 29<sup>th</sup> January 2021 – Tuesday 2<sup>nd</sup> February 2021-*

*Best Start Assessments*

*Wednesday 3<sup>rd</sup> February 2021- Kindergarten commences*



# About Best Start Kindergarten Assessment

Best Start Kindergarten Assessment is a state-wide assessment that helps teachers identify the literacy and numeracy skills of each student at the beginning of Kindergarten.



# Providing the best possible start for your child

---





# Your child

---



All children start school with a range of early literacy and numeracy knowledge, skills and understandings.

Every child has their own unique set of experiences and are already engaging in the world around them to express their ideas and feelings.

# Assessment

---



The Best Start Kindergarten Assessment is designed to identify early literacy and numeracy skills and concepts.

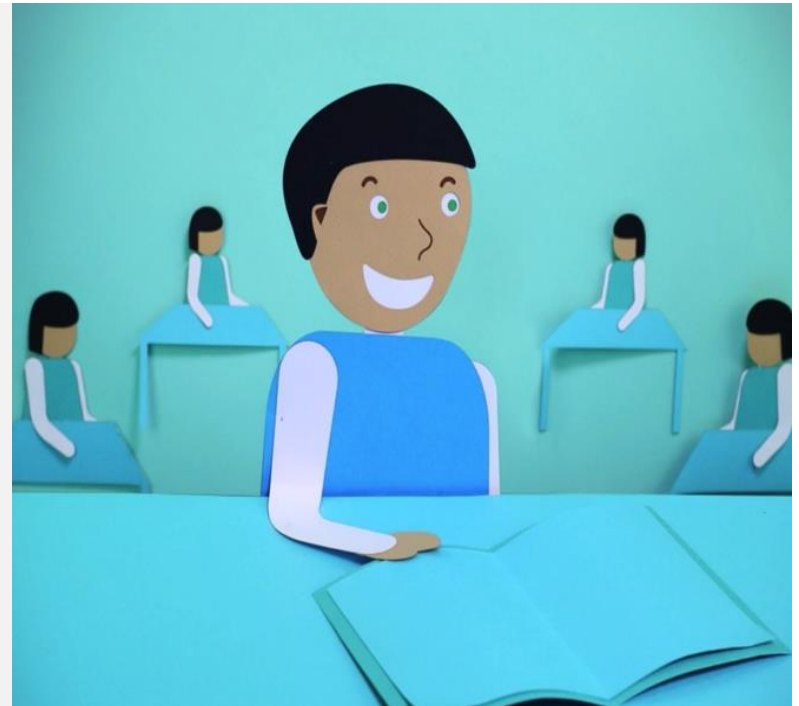
The assessment is not a test and no preparation is required.

The teacher will ask a series of questions to gather information about your child and record their responses.

# Best Start Kindergarten Assessment - Literacy

The literacy assessment tasks are designed to identify your child's literacy skills, such as:

- recognising familiar words;
- identifying sounds and letters;
- writing their own name; and
- understanding how books work.



# Best Start Kindergarten Assessment - Literacy

---

For instance, the teacher will read a picture book to your child and ask:

*'Can you tell me about the story that I just read to you?'*



# Best Start Kindergarten Assessment - Numeracy

---

The numeracy assessment tasks are designed to identify how well your child can count; which numbers they recognise; and whether they can add or subtract small numbers.



# Best Start Kindergarten Assessment- Numeracy

The teacher will ask questions like:

‘Start counting from one and I’ll tell you when to stop.’

‘Can you tell me what number this is?’  
[show ‘5’]



# Understand and plan

---



The information gathered will help teachers to develop effective learning programs that can build upon what each child knows and can do when they start Kindergarten.



# Feedback

---

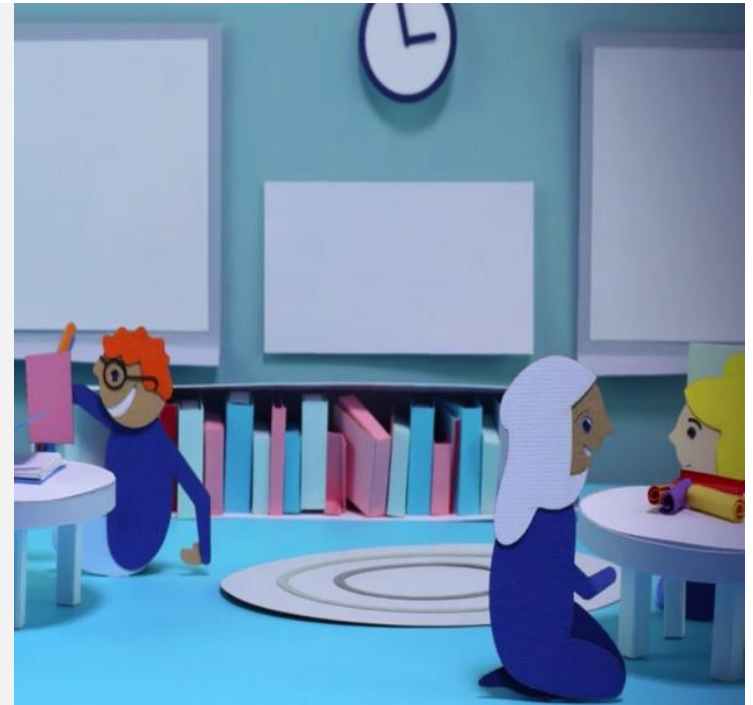


Teachers will provide you with feedback about how you can support your child during the first year of school.

# Inclusive for all children

---

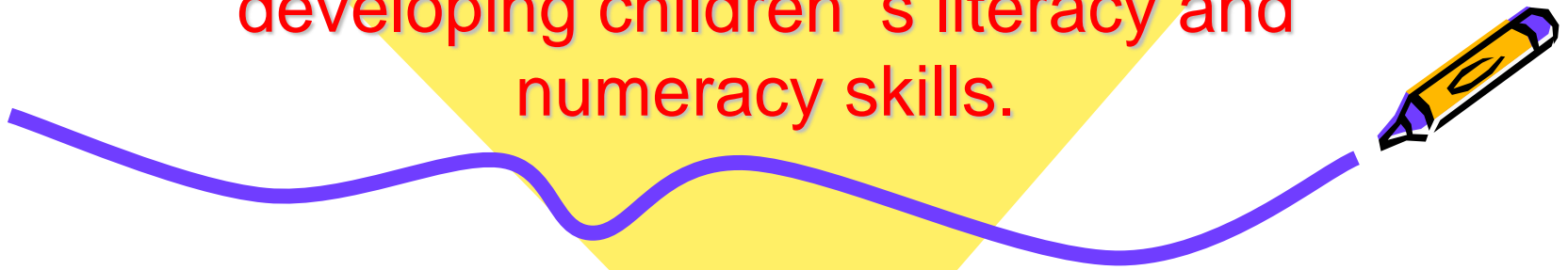
All children beginning Kindergarten in NSW public schools will participate in the Best Start Kindergarten Assessment.





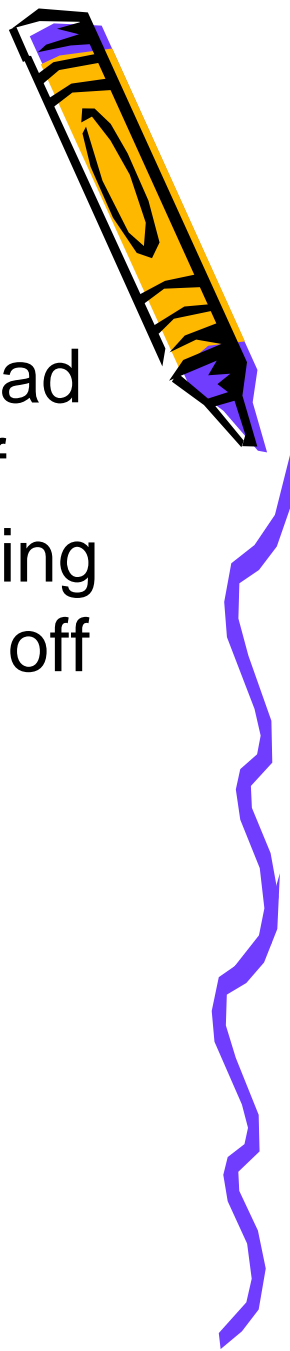
# The Kindergarten Classroom

Most time in Kindergarten is spent  
developing children's literacy and  
numeracy skills.



# Skills for School

- Your child is not expected to be able to read or write before starting school, however, if you spend some time with your child reading and doing other fun activities, they will be off to a great start.
- The main thing is that your child feels confident about starting school.



# Key Learning Areas

- English
- Mathematics
- Science & Technology
- Creative Arts
- HSIE-History and Geography
- Personal Development, Health & Physical Education (PDHPE)



# Preparing for School



- Language skills
- Writing skills
- Mathematics skills
- Personal/social skills
- Physical skills



# Caring for our students



- SLSO's
- School Counsellor
- Learning Support Team
- PBL





# Eating at School Tips



- Write your child's name on their lunchbox
- Use an insulated lunchbox
- Always pack a water bottle
- Remind your child to wash their hands before eating



# Healthy Lunchbox Tips

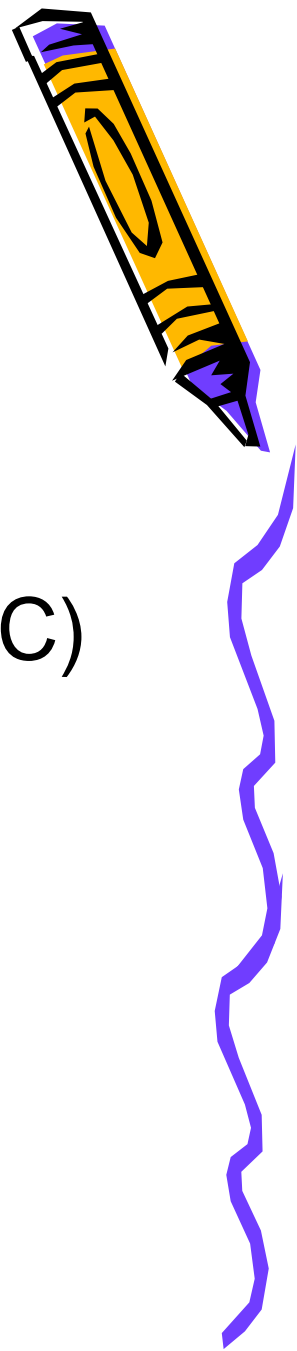


- Include food from a variety of food groups.
- Include a drink: water is the best.
- Involve your child in packing their lunchbox
- Presentation is important.
- Keep food in the lunchbox cold.



# Get involved in the school

- Classroom helpers
- Canteen
- Parents & Citizens' Association (P&C)



# Buying your uniforms



## New

- Uniforms are ordered online and below is the link from our website. This link is also in your parent transition booklet.

<http://www.madeforschool.com.au/store/index/view/id/mount-riverview-public-school/?p=1>

- All Kinder students will receive a hat as a welcome gift from P&C Committee. This will be given out at their Best Start Assessment Time.
- Hats can also be purchased from the school office or second hand uniform shop.

## Second Hand Shop.....near the library

Open every Tuesday during school term - 8:45-9:15am

- payments can be made online and receipt presented for pick up.



# Uniform

## Girls



- Summer Tunic
- Winter tunic with white long sleeve polo or skivvy
- White Socks, or in winter bottle green stockings
- Black closed-in shoes
- School hat

## Boys



- White polo shirt
- Dark grey shorts, or in winter long pants
- Black closed-in shoes
- Grey socks
- School hat

## Sports - unisex



- Red polo shirt
- Bottle green shorts or skort, or in winter tack pants
- Joggers
- Grey socks boys, or white socks girls
- School hat





## Jacket



## Sloppy Joe



Jumpers will now have embroidered logo. Both styles are acceptable.

## Bags

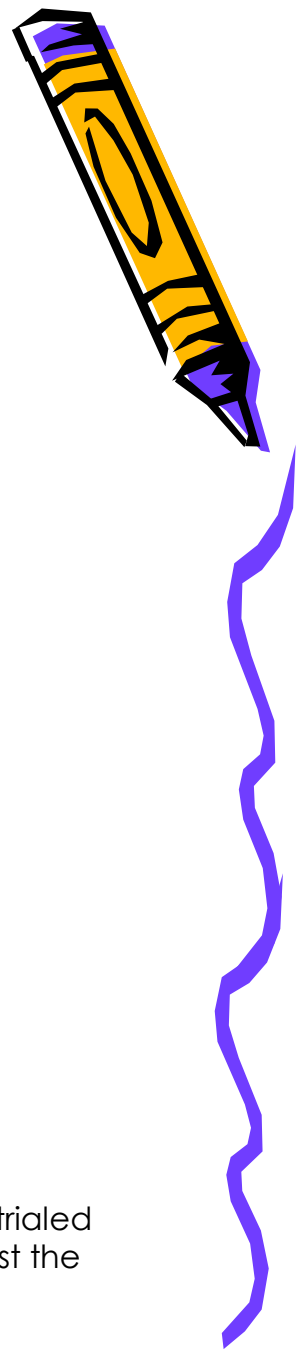


You can purchase a school backpack, or your child can choose any bag they want for school.

## Hats



A number of styles have been trialed and we are moving towards just the bucket style hat. **Caps are not allowed.**



# Time to start school



<https://youtu.be/FHlctVLI1is>

